

Apr 4th, 10:00 AM - 1:00 AM

An economical profile study of Machar colony

Mahnoor Atif
Institute of Business Administration

Follow this and additional works at: <https://ir.iba.edu.pk/esdcber>



Part of the [Food Science Commons](#)

iRepository Citation

Atif, M. (2021). An economical profile study of Machar colony. CBER Conference. Retrieved from <https://ir.iba.edu.pk/esdcber/2021/day3/23>

This document is brought to you by *iRepository*. For more information, please contact irepository@iba.edu.pk.

AN ECONOMICAL PROFILE STUDY OF MACHAR COLONY

https://ir.iiu.edu.pk/vol21/day3/23
Mannoor Afir

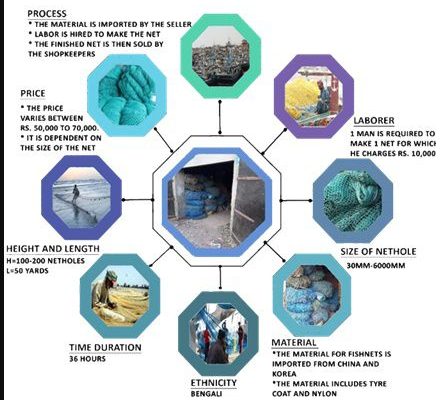
INTRODUCTION

Economy of Pakistan is the 25th Karachi generates about 25% of the national GDP.

FISHING

- Lack of basic knowledge as old methods of fishing are still being followed by fishermen.
- Severely affected by a variety of pollutants.
- Over-fishing of shrimps throughout the year.

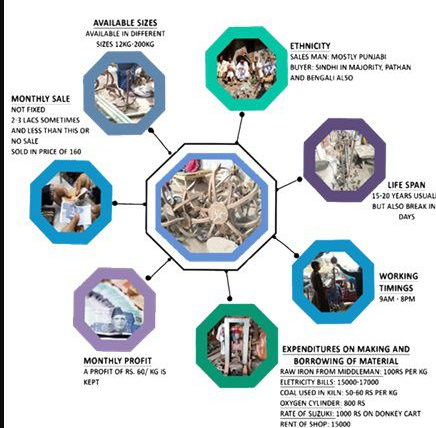
FISHNET MAKERS



SHRIMP PEELERS



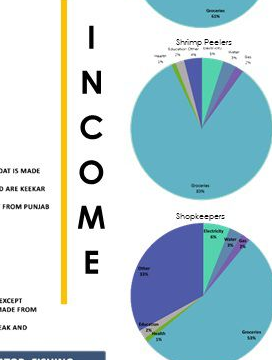
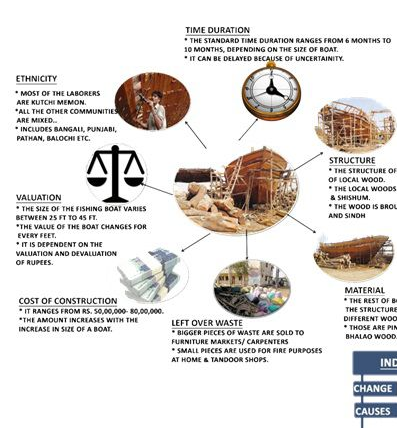
ANCHOR MAKERS



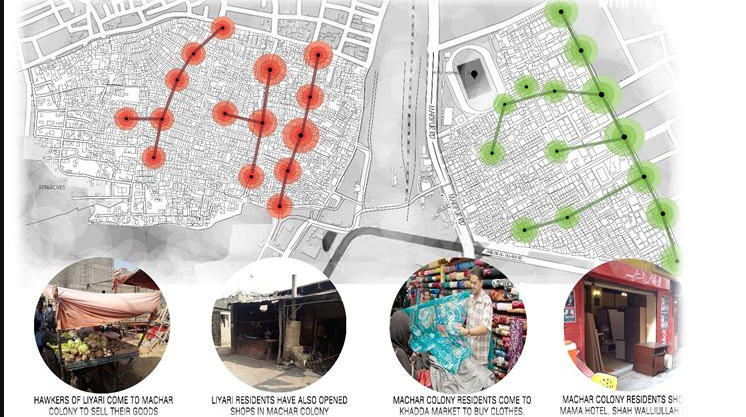
LAUNCH OWNERS



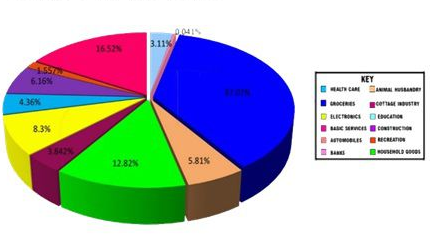
BOAT MAKERS



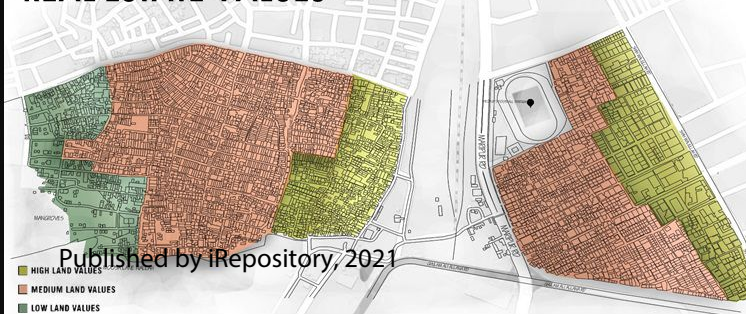
CATCHMENT AREAS



SHOPKEEPERS



REAL ESTATE VALUES



POTENTIALS AND THREATS

